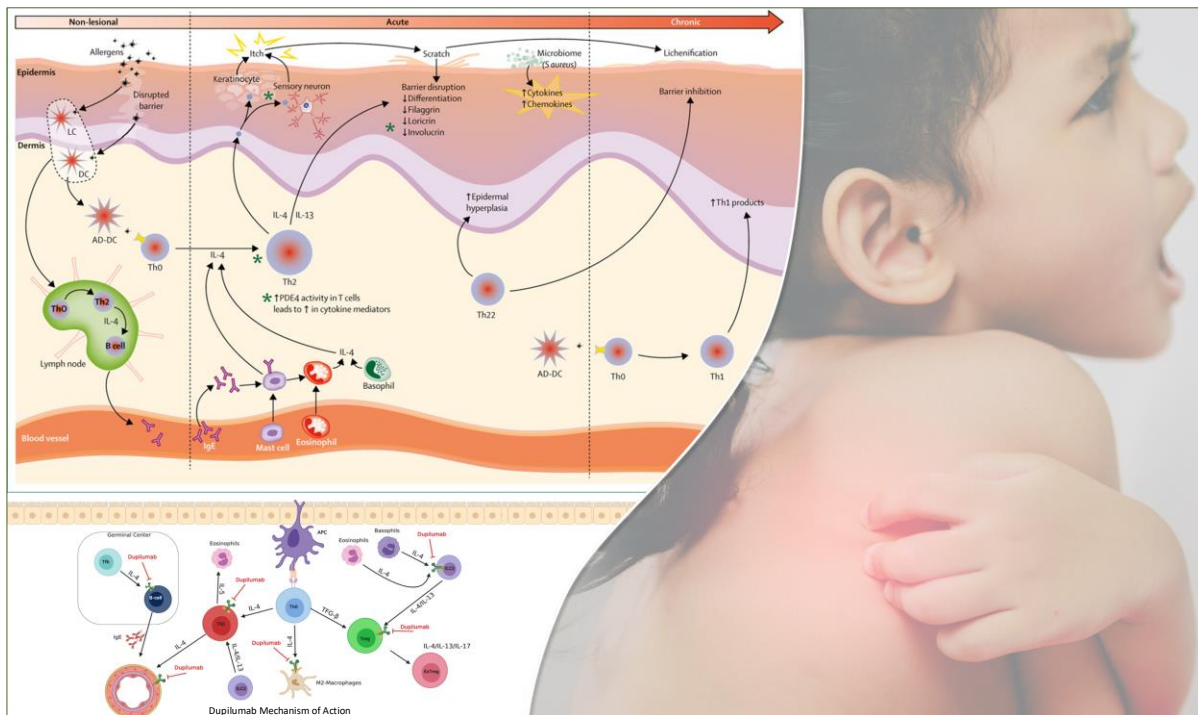


Clinically Meaningful Changes in Pediatric Atopic Dermatitis



Study Defines Clinically Meaningful Changes in Atopic Dermatitis Severity Scores for Pediatric Patients

Based on the post-hoc analysis of the Phase 3 LIBERTY AD PEDS trial, scholars from Oregon Health & Science University, have recently determined clinically meaningful within-patient changes in atopic dermatitis (AD) severity scores for pediatric patients. The investigators noted a particular clinical gap in established thresholds for clinically meaningful changes in the Patient-Oriented Eczema Measure (POEM) assessments and Children's Dermatology Life Quality Index (CDLQI) for children aged 6-11. Hence, they evaluated data from the randomized, double-blind placebo-controlled trial of dupilumab in the pediatric patients aged 6 to 11 years. They applied anchor-based methods to estimate mean change in POEM and CDLQI scores from baseline to week 16, with anchors of a 1-point improvement in the Patient Global Impression of Disease (PGID) scale and an improvement in score of "A little better" on the Patient Global Impression of Change (PGIC) scale. The distribution-based methods, a one-half standard deviation (SD) at baseline and a standard error mean (SEM) were also used. They calculated that the mean POEM change scores associated with PGID improvement of 1 point was -8.40; the mean POEM change associated with a PGIC of a "little better improvement" was -6.30. For CDLQI, the mean change in score associated with the minimum changes in PGID and PGIC were -7.30 and -6.80, respectively. Based on these findings, the investigators confirmed that in children with severe AD, a minimum individual within-patient change of 6 points in POEM and CDLQI scores is an appropriate threshold for defining a clinically meaningful within-patient change.

[Click here](#) to read more

Reference: Simpson, E.L., de Bruin-Weller, M., Bansal, A. et al. Definition of Clinically Meaningful Within-Patient Changes in POEM and CDLQI in Children 6 to 11 Years of Age with Severe Atopic Dermatitis. *Dermatol Ther (Heidelb)* 11, 1415–1422 (2021). <https://doi.org/10.1007/s13555-021-00543-7>

Disclaimer: For the use of a registered medical practitioner or a hospital or a laboratory only.